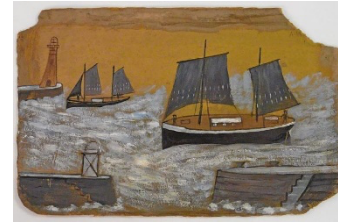


Seaside Year 5

Subject Specific Vocabulary

Observational drawing	To draw or paint something as accurately as possible.
pattern	A repeated decorative design.
Blend	When colours are slightly mixed together.
line	A mark made on a surface that joins different points.
shade	the darkening or colouring of an illustration or diagram with parallel lines or a block of colour
sketch	a rough or unfinished drawing or painting, often made to assist in making a more finished picture.
outline	A line that marks the outer limits of an object or figure.
printing	an artistic process based on the principle of transferring images from a matrix onto another surface, most often paper or fabric.



Sticky knowledge

- Alfred Wallis (1855-1942) usually made paintings about his memories.
 - He often painted on old pieces of wood, cardboard, lids from boxes or objects he had found, largely because he didn't have very much money.
 - He was also a fisherman.
- Alfred Wallis preferred using paint for ships or for houses, rather than artists' paints.
 - His paintings use similar colours: greys, greens, browns, blacks and whites.
- He witnessed a local shipwreck in 1938 and painted what he had seen. This painting was called 'The Wreck of the Alba'. It shows a steamer ship running into stormy seas on its way to Italy. A Cornish lifeboat was launched to save the 23 Hungarian crew on board. However, a huge wave crashed into the lifeboat, capsizing it.